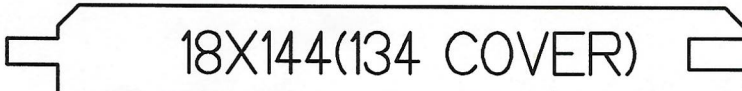
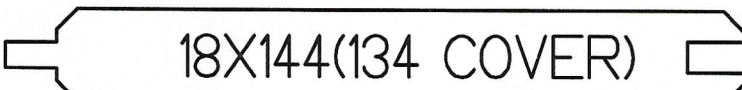
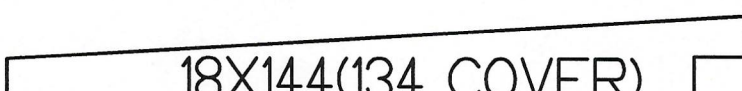
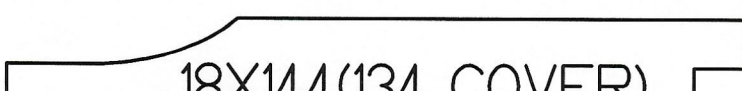
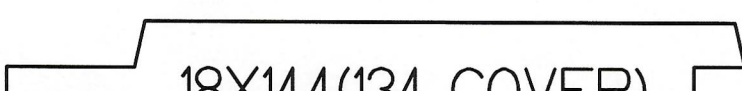
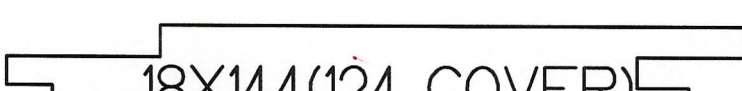
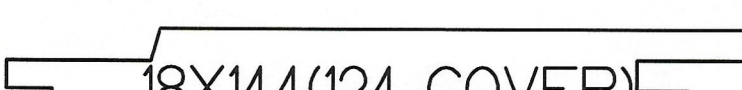
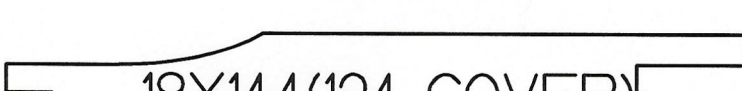
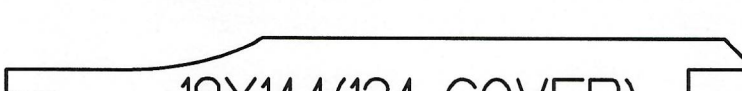


- RTC 1**  18X144(134 COVER)
- RTC 2**  18X144(134 COVER)
- RTC 3**  18X144(134 COVER)
- RTC 4**  18X144(134 COVER)
- RTC 5**  18X144(134 COVER)
- RTC 6**  18X144(124 COVER)
- RTC 7**  18X144(124 COVER)
- RTC 8**  18X144(124 COVER)
- RTC 9**  18X144(134 COVER)

THERMO RADIATA PINE

Thermo Radiata Pine is in the highest quality classes of the thermo wood species. The thermal modification provides excellent properties for cladding applications.

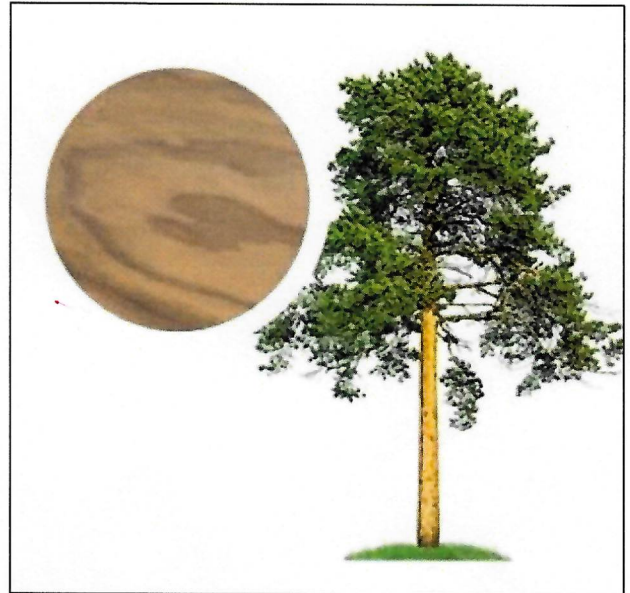
Thermo radiata pine is a stylish dark brown wood with very few to no knots. Generally 3 sides clear. The wood type combines the ecological aspects of thermo woods with great durability and stability of Radiata Pine



KNOT-FREE CONIFEROUS TREE

Radiata pine or insignis pine (*Pinus radiata*) is a coniferous tree of the pine family in the genus *Pinus*. Radiata pine is grown in New Zealand, Australia, Chile, Spain and other regions, and the trees are typically pruned twice during their growth period in order to remove the lower branches so that the tree grows a knot-free layer. Radiata pine is a fast-growing, high-quality wood that reaches cutting maturity quickly. However, its quick growth makes the wood lighter, softer and more porous than that of the common pine.

Radiata pine is well suited for thermal modification, becoming more durable and stable and acquiring a beautiful golden-brown colour through the process. We offer radiata pine cladding and wall panelling for indoor and outdoor use in our Benchmark range.



THE COLOUR OF THE WOOD CHANGES OVER TIME

Thermal modification gives radiata pine a naturally beautiful golden-brown tone.

As with any wood, the surface of thermally modified radiata pine will fade to a natural silver-grey colour over time. This process starts immediately after the products are installed and can take a few months to several years depending on how much UV light they are exposed to. The durability of the boards is not affected.

It must be considered that wood is a natural material and the change of colour over time may be uneven. Each table ages in its own way. And the different sides of the house facade age differently, depending on the sun and rain falling on the board.

To reduce discoloration or restore the original colour of thermal wood, boards can be protected by covering them with a UV-resistant pigmented finish (wax, stain, paint, mineral oil, etc.).

